

2013 Accountability Progress Report

School Name: Pleasant Valley High

District Name: Chico Unified

Produced by: SSchoolPlan and SchoolCity, Inc.

For more information contact:

Santa Clara County Office of Education
Standards & Assessment Department
(408) 453-6527

2004 - 2013 Academic Performance Index (API)

Pleasant Valley High

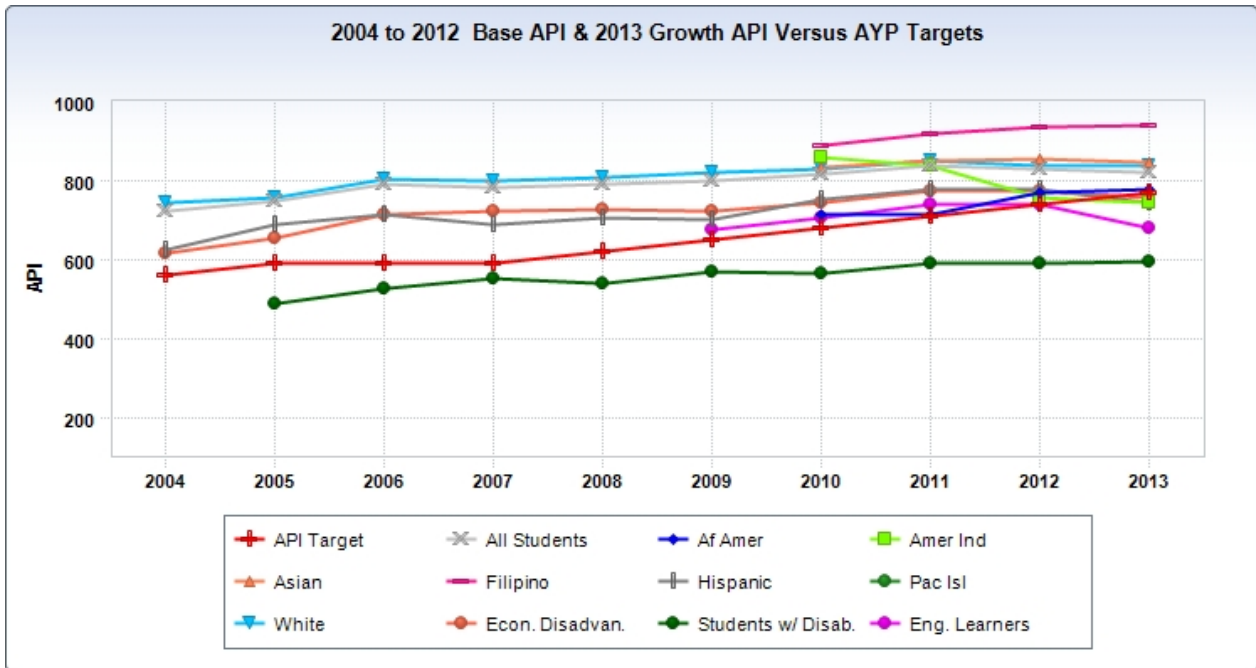
Base API Scores

Measurable Objectives (AMOs)	2004 API (Base)	2005 API (Base)	2006 API (Base)	2007 API (Base)	2008 API (Base)	2009 API (Base)	2010 API (Base)	2011 API (Base)	2012 API (Base)	2013 API (Growth)
API Target	560	590	590	590	620	650	680	710	740	770
All Students	724	748	793	783	790	800	815	836	830	821
Af Amer							715	713	771	779
Amer Ind							860	840	756	745
Asian							832	849	857	848
Filipino							889	920	936	939
Hispanic	624	690	714	689	706	701	751	777	779	746
Pac Isl										
White	742	758	803	800	807	820	828	850	839	836
Econ. Disadvan.	616	655	716	722	726	723	746	774	775	758
Students w/ Disab.		490	527	551	538	569	567	589	589	595
Eng. Learners						675	705	739	738	678

Met API Growth Target?

Annual Measurable Objectives (AMOs)	2004 API Growth	2005 API Growth	2006 API Growth	2007 API Growth	2008 API Growth	2009 API Growth	2010 API Growth	2011 API Growth	2012 API Growth	2013 API Growth
All Students	Yes	Yes	Yes	No	Yes	Yes	Yes	Yes	Yes	Yes
Af Amer										
Amer Ind										
Asian										
Filipino										
Hispanic	Yes	Yes	Yes	No	Yes	No	Yes	Yes	No	No
Pac Isl										
White	Yes	Yes	Yes	Yes	Yes	Yes	Yes	Yes	Yes	Yes
Econ. Disadvan.	No	Yes	Yes	Yes	No	No	Yes	Yes	No	No
Students w/ Disab.			Yes	Yes	No	Yes	No	Yes	No	No
Eng. Learners							Yes	Yes	No	No

2004 to 2012 Base API & 2013 Growth API Versus AYP Targets



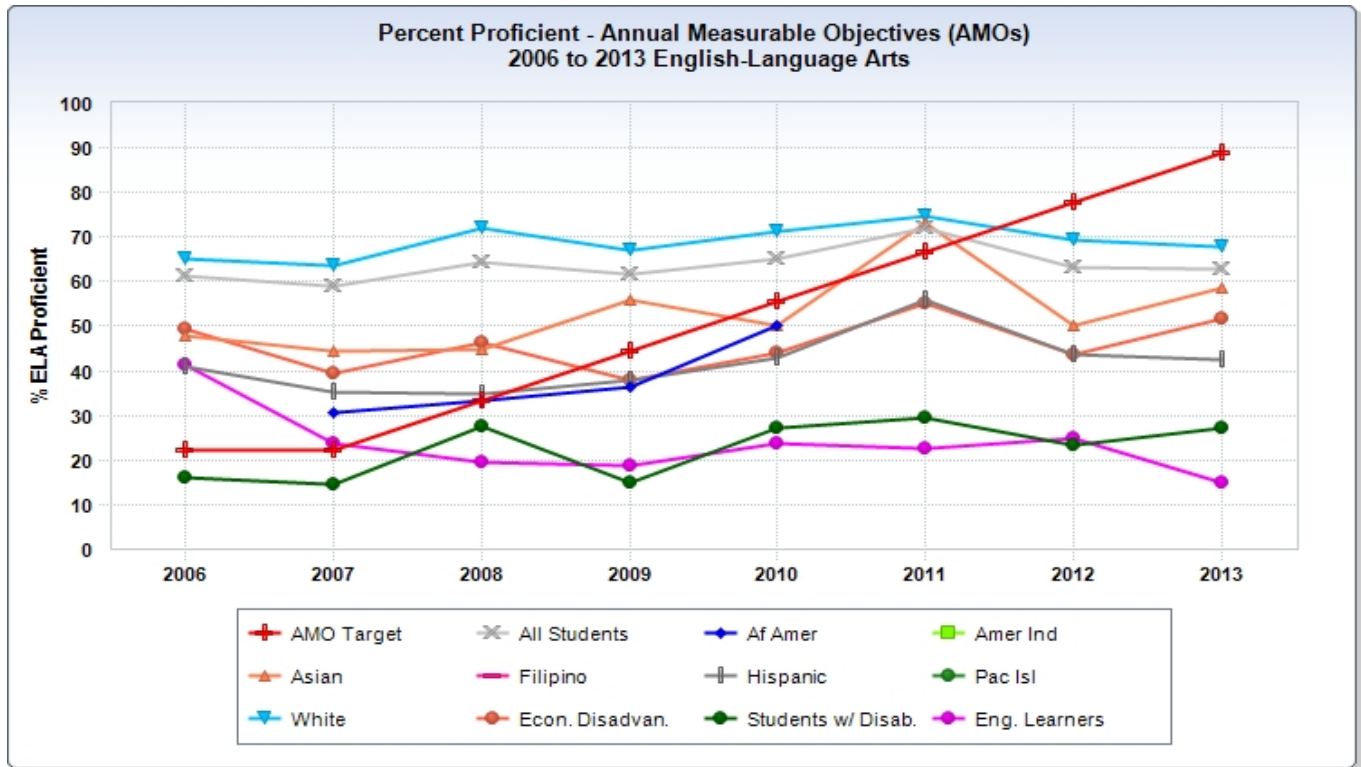
2006 - 2013 Adequate Yearly Progress (AYP)

Pleasant Valley High AYP: English Language Arts (ELA)

% ELA Proficient

ELA AMO Met?

Measurable Objectives (AMOs)	% ELA Proficient								ELA AMO Met?							
	2006 ELA	2007 ELA	2008 ELA	2009 ELA	2010 ELA	2011 ELA	2012 ELA	2013 ELA	2006 ELA	2007 ELA	2008 ELA	2009 ELA	2010 ELA	2011 ELA	2012 ELA	2013 ELA
AMO Target	22.3	22.3	33.4	44.5	55.6	66.7	77.8	88.9								
All Students	61.4	58.9	64.3	61.5	65.3	72.0	63.4	63.0	Yes	Yes	Yes	Yes	Yes	Yes	No	No
Af Amer		30.8	33.3	36.4	50.0				--	--	--	--	--	--	--	--
Amer Ind									--	--	--	--	--	--	--	--
Asian	47.8	44.4	44.8	55.9	50.0	73.1	50.0	58.6	--	--	--	--	--	--	--	--
Filipino									--	--	--	--	--	--	--	--
Hispanic	40.9	35.3	35.0	37.9	43.1	56.1	43.6	42.4	--	--	--	--	--	Yes	No	No
Pac Isl									--	--	--	--	--	--	--	--
White	65.2	63.7	72.0	67.0	71.1	74.6	69.2	67.8	Yes	Yes	Yes	Yes	Yes	Yes	No	No
Econ. Disadvan.	49.5	39.4	46.3	38.1	44.2	55.1	43.8	51.7	Yes	Yes	Yes	No	No	No	No	No
Students w/ Disab.	16.2	14.6	27.5	15.0	27.3	29.4	23.5	27.3	--	--	--	--	--	--	--	--
Eng. Learners	41.3	23.9	19.5	18.8	23.8	22.6	25.0	15.0	--	--	--	--	--	--	--	--



2006 - 2013 Adequate Yearly Progress (AYP)

Pleasant Valley High

AYP: Mathematics

% Math Proficient

Math AMO Met?

Measurable Objectives (AMOs)	% Math Proficient								Math AMO Met?							
	2006 Math	2007 Math	2008 Math	2009 Math	2010 Math	2011 Math	2012 Math	2013 Math	2006 Math	2007 Math	2008 Math	2009 Math	2010 Math	2011 Math	2012 Math	2013 Math
AMO Target	20.9	20.9	32.2	43.5	54.8	66.1	77.4	88.7								
All Students	71.6	72.1	70.2	71.5	69.9	67.9	66.4	72.1	Yes	Yes	Yes	Yes	Yes	Yes	No	Yes
Af Amer		23.1	41.7	45.5	37.5				--	--	--	--	--	--	--	--
Amer Ind									--	--	--	--	--	--	--	--
Asian	82.6	71.4	69.0	74.3	71.0	73.1	75.9	82.8	--	--	--	--	--	--	--	--
Filipino									--	--	--	--	--	--	--	--
Hispanic	57.8	44.4	44.3	49.3	50.8	55.9	45.6	52.2	--	--	--	--	--	Yes	No	No
Pac Isl									--	--	--	--	--	--	--	--
White	73.6	77.5	75.6	76.0	75.2	70.0	70.4	75.5	Yes	Yes	Yes	Yes	Yes	Yes	No	Yes
Econ. Disadvan.	61.6	57.9	58.3	52.2	50.0	51.0	49.0	58.4	Yes	Yes	Yes	Yes	No	Yes	No	No
Students w/ Disab.	30.8	33.9	16.7	25.7	26.0	27.3	17.5	26.3	--	--	--	--	--	--	--	--
Eng. Learners	73.9	45.1	45.0	44.9	40.9	43.8	30.0	33.3	--	--	--	--	--	--	--	--

